

[TopPage](#)>>[Search Result](#)>>7236B

# Angular Contact Ball Bearings

Bearing No. : **NACHI 7236B**

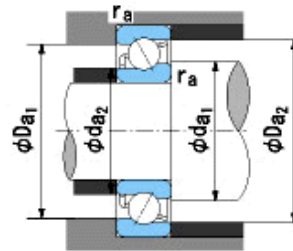
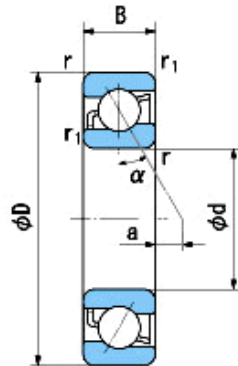
■ Bearing Type

■ Clearance

■ Tolerance Class

### Dimensions

d = 180  
0  
-0.025  
D = 320  
0  
-0.040  
B = 52  
0  
-0.250  
r = 4~6.5  
(Radial Direction)  
r = 4~9  
(Axial Direction)  
r1 = 1.5~3  
(Radial Direction)  
r1 = 1.5~5  
(Axial Direction)  
a = 48.9



### Dimensions

da1(min) = 198  
da2(min) = 189  
Da1(max) = 302  
Da2(max) = 311  
ra(max) = 3  
ra1(max) = 1.5  
Mass = 19.9 kg

Basic Dynamic Load Rating Cr : **262,000** N

Basic Static Load Rating Cor : **330,000** N

Limiting Speed ;

Grease Lubrication : **1,500** min<sup>-1</sup>

Oil Lubrication : **2,000** min<sup>-1</sup>

	INNER RING	OUTER RING
O.D.Surface Runout with Side :		-
Axial Runout with Bore :	-	-
Axial Runout with Raceway :	-	-
Width Variation :	<b>0.030</b>	<b>0.030</b>
Radial Runout :	<b>0.030</b>	<b>0.070</b>